



# Adverse childhood experiences are common but preventable.

KNOW YOUR DATA. EMPOWER YOUR COMMUNITY.

## South Carolina adverse childhood experiences (ACEs) data

**62%**

of South Carolina adults have reported one ACE as a child

**22%**

of South Carolina adults have reported two or more ACEs

**16%**

of South Carolina adults have reported four or more ACEs

Data Source: The Behavioral Risk Factor Surveillance System (BRFSS) 2014-2015.



### South Carolina ACE Data Collection

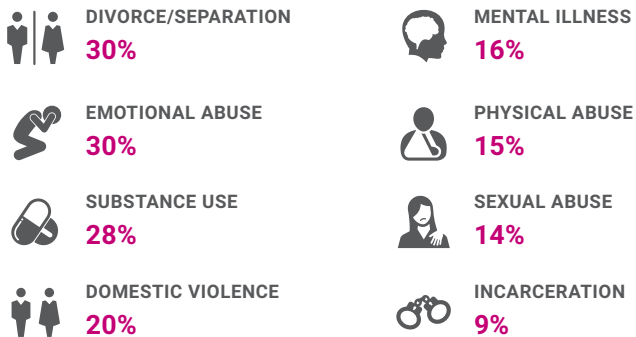
ACE data are collected via the Behavioral Risk Factor Surveillance System (BRFSS) managed by the South Carolina Department of Health and Environmental Control (DHEC). The BRFSS is a cross-sectional, telephone-based survey of health-related risk behaviors, history of chronic health conditions, and preventative behaviors. Non-institutionalized adults 18 years or older are randomly selected to take part in the survey. The survey is conducted year-round using random digit dialing (RDD) techniques on both landlines and cell phones. Children's Trust collected the data in 2014-2015 through the

BRFSS with funds provided through the community-based child abuse prevention funds. The BlueCross BlueShield Foundation of South Carolina is supporting current efforts.

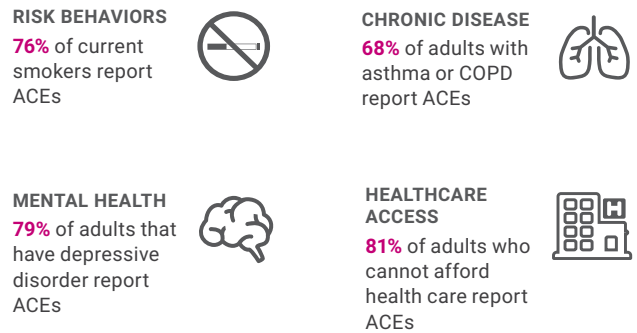
### ACE Variables

The ACEs data can be examined in a number of different ways including the experience of one or more ACEs (prevalence), the experience of particular ACEs (individual) and the experience of multiple ACEs (cumulative).

#### Prevalence of ACE types



#### Preventing ACEs improves health and well-being



Data Source: The Behavioral Risk Factor Surveillance System (BRFSS) 2014-2015.